

DECEMBER 1980

ANNIVERSARY ISSUE

FIRST ANNUAL REPORT PRESENTED

Representatives of our bank, auditors, bonding company and law firm received copies of our First Annual Report at a recent luncheon.



Season's Greetings!

Everyone at Coleman Industrial Construction joins in wishing you and yours a warm and happy holiday.

PERSONNEL PROFILE

SID KIDD MAKES IT HAPPEN IN THE FIELD

"Coming up through the ranks" accurately describes the growth of Sid Kidd's construction career. Sid is a top-notch superintendent whose performance in the field is an important factor in Col-Ind-Con's ability to deliver high quality work within the client's budget and schedule.

Sid started out in construction as a house carpenter and was later hired by Daniel Construction. Within six months Sid was a foreman running crews of 18-36 men. Eventually Sid became a Multi-Craft General Foreman for Daniel supervising crews of carpenters, brick layers, concrete workers, pipe layers and iron workers.



Experience in running the many projects and crews Sid has been involved with has given him an extremely wide scope in the field.

Although Sid, his wife Jo Ann and two children make their home in Springfield, Missouri, Sid is used to a lot of travel. He can go into a new area and get the job done, on time and on the money. Having Sid as a part of our field organization is a real plus at Col-Ind-Con.

ECONOMICS NOTEBOOK

By Don Coleman

SUMMER JOBS FOR COLLEGE STUDENTS

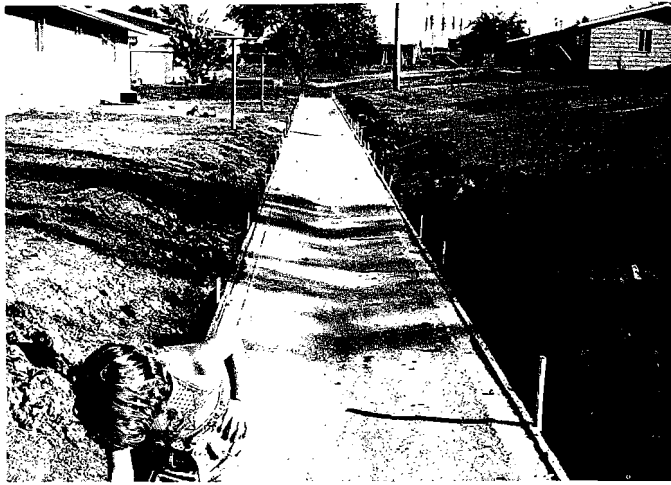
Although the "Economics Notebook" has been reserved for discussions of current American business trends, this month I would like to use it as a forum to publicize an important program.

Coleman Industrial Construction is in the unique position of being able to employ college students in field jobs in construction for the summer. Last year we employed several bright young persons in a variety of duties on some very interesting projects. Our work load appears to be of sufficient size to allow us to do the same this summer.

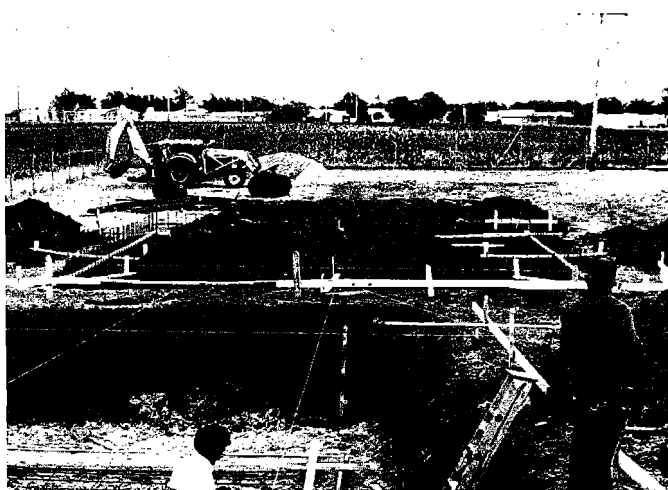
We would like to receive a resume, school transcript and a brief letter on the student's career objectives. It would be best to send this after fall grades have been posted but not later than March 1, 1981. We will interview candidates during March and send notification of selection in April.

This is an excellent opportunity for students who want to learn about the practical aspects of construction to travel in Mid-west states while earning good pay for the summer.

If you know of any college students majoring in business or engineering who have an interest in the construction industry, please pass a copy of this newsletter on to them.



Drainage improvements at Whiteman AFB to help eliminate local flooding in the residential areas.



SEWAGE TREATMENT PLANT AT CLAFLIN, KANSAS

Left:

Laboratory building excavation proceeds ahead of schedule due to excellent construction weather.



Backhoe installs new outfall line while old lagoon drains.

* CUSTOMER PLEASERS! *

WE PERFORM WELL UNDER ADVERSE CONDITIONS

Major projects currently being completed by Col-Ind-Con are varied in scope, ranging from a corrosion protection project at Melvern Lake, Kansas to a site improvement job at Whiteman Air Force Base to a clarifier and pipe installation at Brush Creek, Iowa.

All of these projects, though different from one another, are alike in one important way. Each of them tested the ability of Col-Ind-Con to work under adverse conditions with complex objectives to be reached. On each project our crews have kept the jobs on schedule despite unusual working conditions.

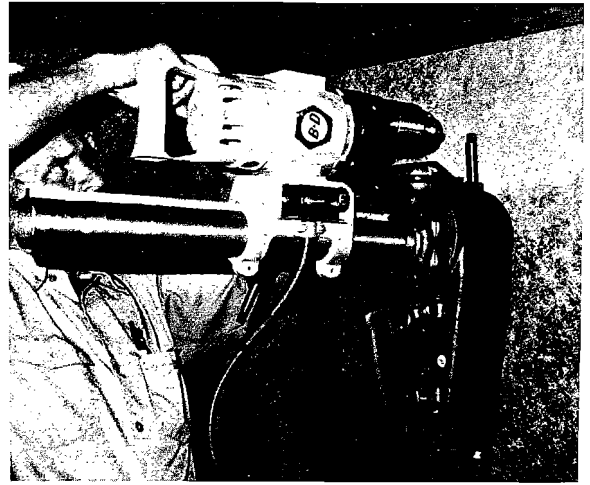
Creative thinking and well-planned field organizations are the keys to the success of jobs like these, and at Col-Ind-Con, success is measured in terms of client satisfaction. Owners and engineers on these projects have been pleased with our ability to perform well and on schedule regardless of the difficulties involved.



Digging and laying outfall line. Evans, Bierly Hutcheson of Great Bend, Kansas is the engineer on this project.



Melvorn Lake Dam, Kansas - Al Aimers and Alonzo Gatlin had to row and climb their way down to the job site. Our job is where the customer needs us.



Special jobs require special tools. The Melvorn corrosion protection job required a drill press which connected magnetically to the slide gates in the dam.

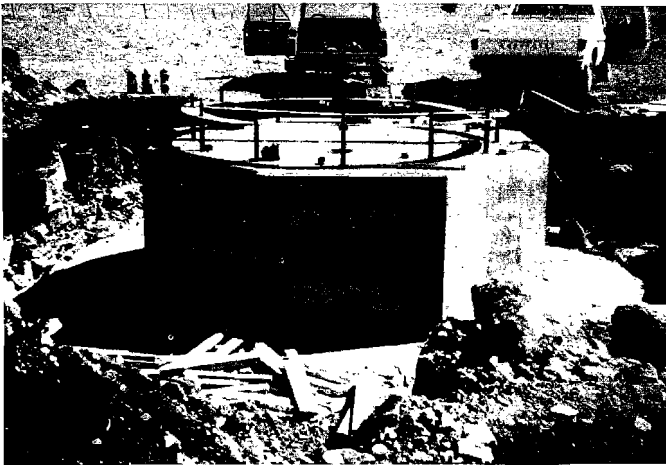
CONCRETE FOUNDATIONS BECOMING A SPECIALTY

A large portion of work done by Col-Ind-Con this year has been in building concrete foundations and floors. Included are many tank and standpipe foundations and floors, treatment plants and other pollution control projects, a large coal crusher house foundation and the foundation and floor for a box plant.

Many of these foundations have been complex or unusual in design. Col-Ind-Con has built a reputation for providing production at costs within owner budgets.

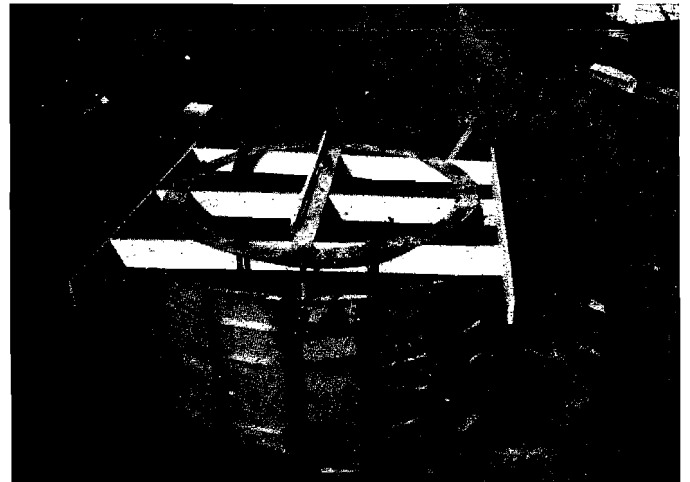
Call us when your plans call for a concrete foundation. We can help with preliminary plans, costs and scheduling and have your project on line and making a profit in a surprisingly short time.

TWO STANDPIPE FOUNDATIONS BUILT IN SHORT TIME FOR SAUDER INDUSTRIES



EMPORIA, KANSAS

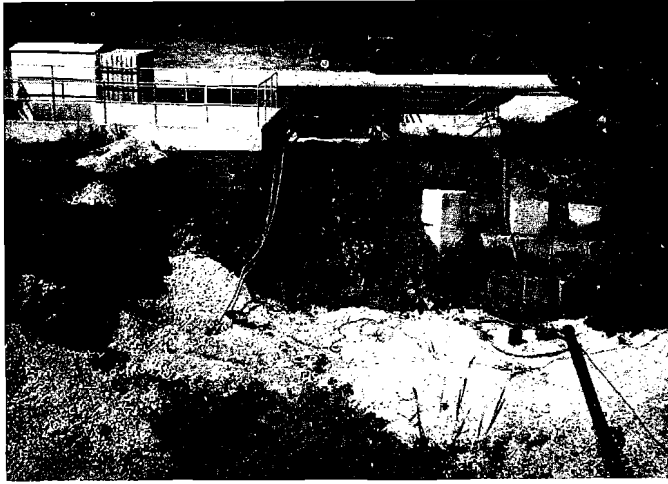
Construction was complicated by 75 yards of rock which required drilling and blasting before construction could begin.



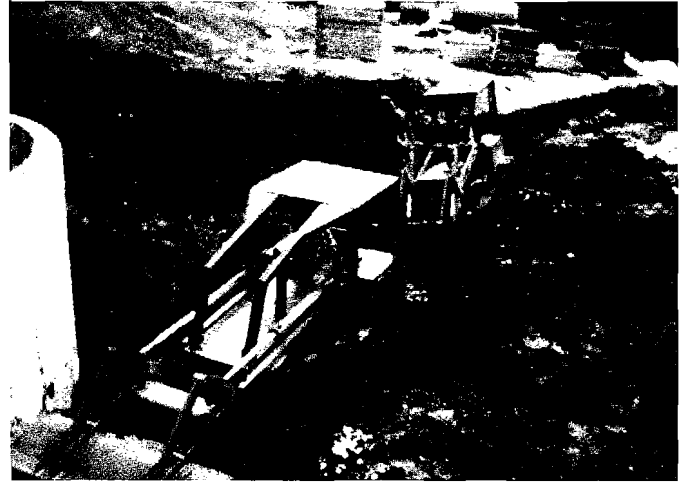
MONTGOMERY COUNTY, KANSAS

This foundation was built in only four days by Steve Farver and crew.

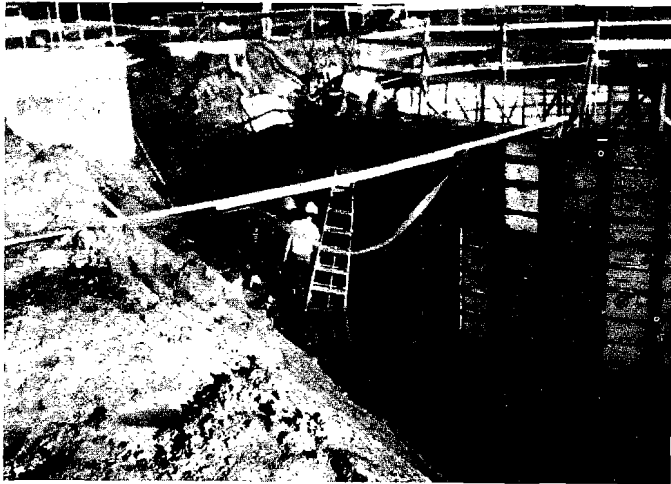
CLARIFIER INSTALLATION AT BURLINGTON, IOWA



View of clarifier excavation at Burlington, Iowa Ammunition Plant showing confined work area and concrete gravity blocks holding up bank. Also shows three water pumps keeping the hole dry.



Working conditions at Burlington plant got so bad that when one highloader got stuck it took another highloader to pull it out.



Water, water everywhere...wet conditions continually interfered with work, but Steve Farver and his crew kept the job ahead of schedule.



The end is in sight. Structure backfill is complete in spite of tough working conditions. Note that an underground stream has filled clarifier almost to the top with water.

IT WAS A VERY GOOD YEAR...

We at Col-Ind-Con are pleased to report the completion of a successful first year in business.

We have serviced over 30 clients by installing over \$1 million of new construction in place. Judging from our present backlog, we expect to more than double our volume and be of even greater service to our customers next year.

We work in many states: Missouri, Kansas, Iowa, Nebraska and Texas, and are bidding work in other nearby states.

Our staff has increased steadily. Four field crews and three estimator-superintendents satisfy our customer needs for production.

Being a productive, growing company is our way of helping to rebuild America's economic growth.

COL·IND·CON

P. O. BOX 14097 · KANSAS CITY, MISSOURI 64152 · 816 · 741-8383