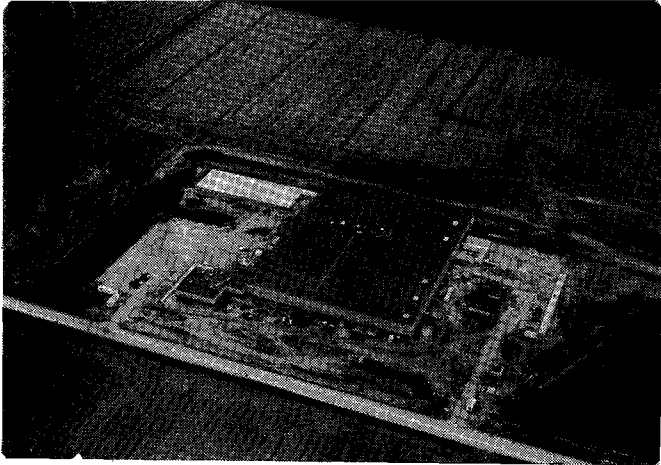


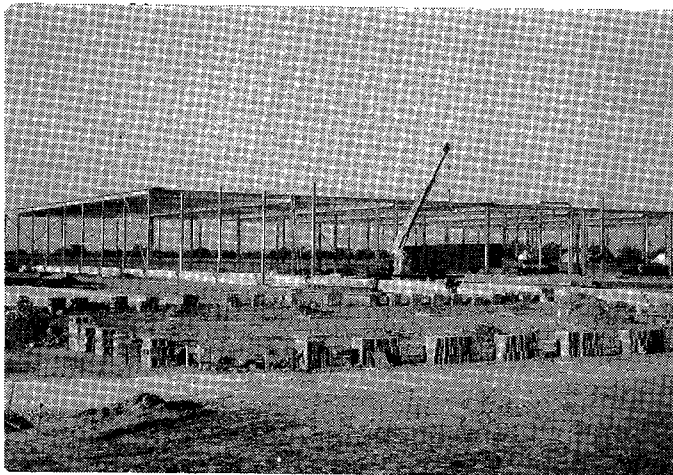
CONCRETE FOUNDATIONS

TRI-WALL CONTAINER BUILDING AT MEXICO, MISSOURI



Aerial photo of Tri-Wall Container Corp. at Mexico, Mo. Foundations and concrete were done by Coleman Industrial Construction.

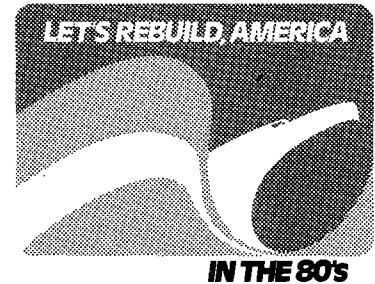
Framing for the building was done after Col-Ind-Con crews completed a foundation sub-contract on schedule in spite of a delay due to a labor dispute by other contractors.



WATER TOWER FOUNDATION FOR BROWN STEEL

Some jobs are just tough. This foundation at De Soto, Missouri required removal of some very hard rock.

COL-IND-CON PROMOTES U. S. CHAMBER THEME



The U. S. Chamber of Commerce currently has a theme being voiced by their chief spokesman, William Verity. He is encouraging Americans to become aware of our worn out, inefficient production regulations and work towards changing both to increase our productive capacity.

Coleman Industrial Construction has adapted that theme and is striving for greater production at lower cost for our customers.

We want to give you "more building for your buck" in the 80's.

This month's newsletter features some of our projects in which the customer received a bargain because of innovation and special effort by our field crews and estimators.

We are constantly looking for ways to be more competitive.